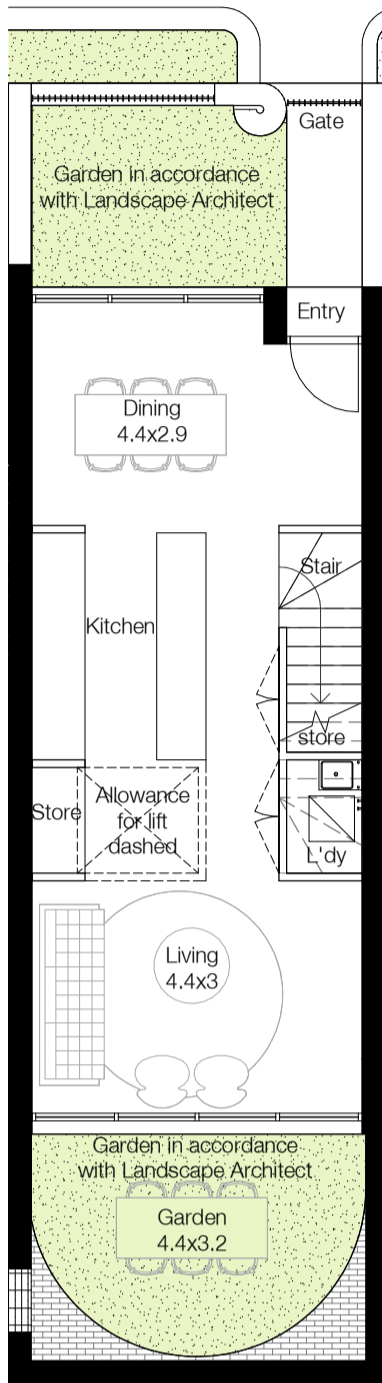


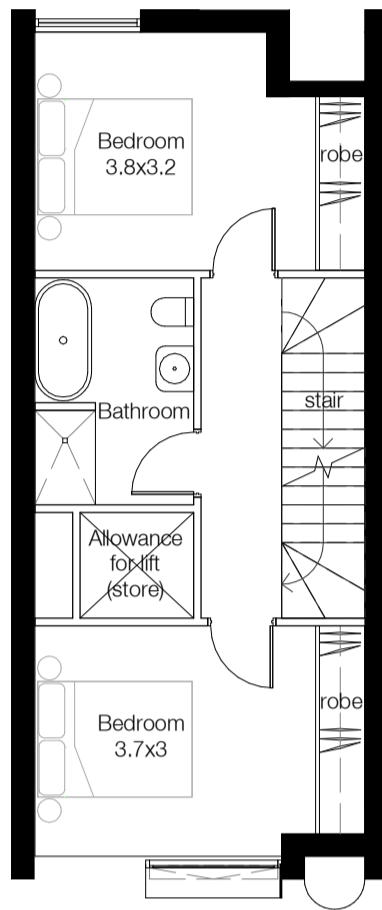
Nominated Architects: Adam Haddow-7188 | John Pradel-7004

FOR APPROVAL

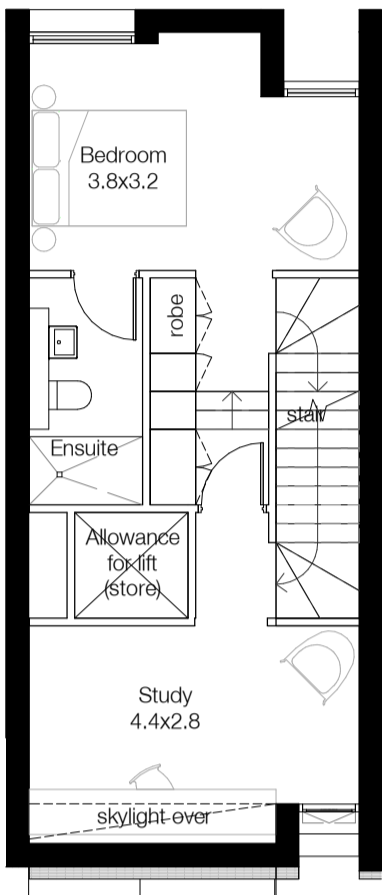
| Rev | Date       | Revision                 | By | Chk. |
|-----|------------|--------------------------|----|------|
| 1   | 05.05.2020 | Preliminary - DA Set 20% | JS | WG   |
| 2   | 19.05.2020 | Preliminary - DA Set 40% | JS | WG   |
| 3   | 21.07.2020 | For Coordination         | JS | WG   |
| 4   | 27.08.2020 | For DA                   | JS | WG   |



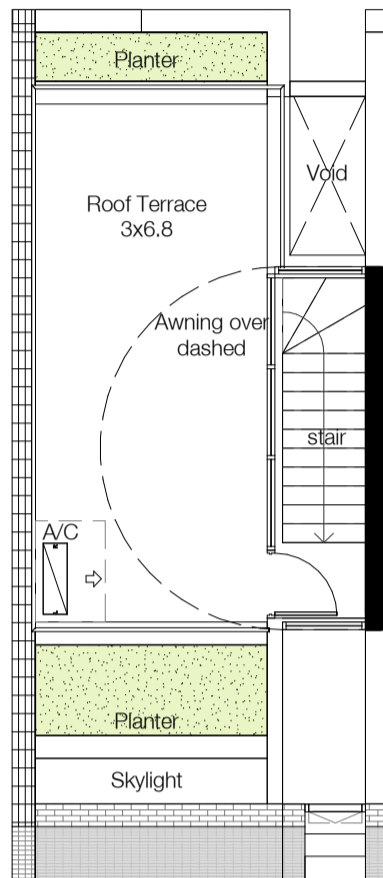
Terrace Type 2 - Ground



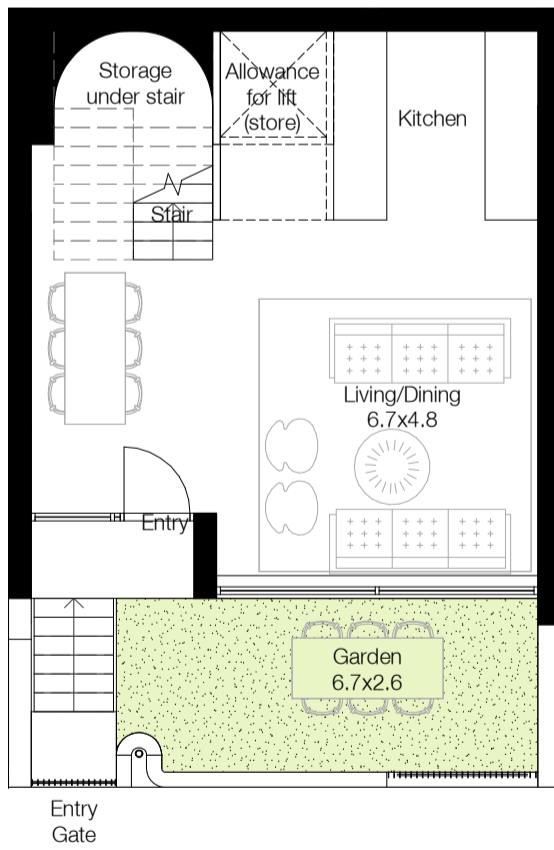
Terrace Type 2 - Level 1



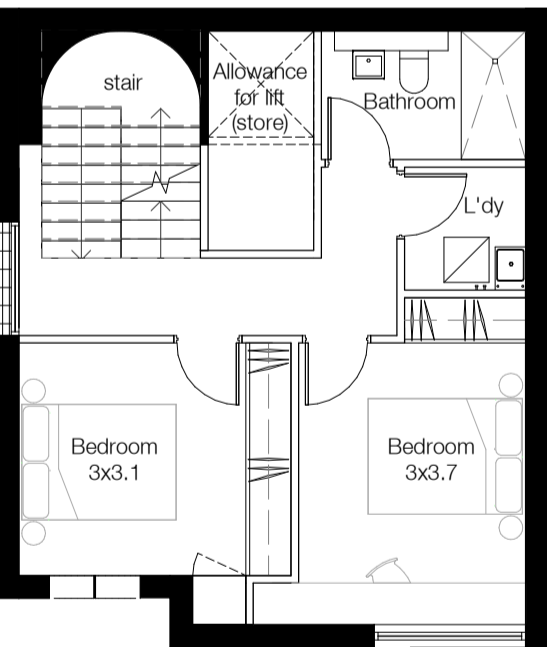
Terrace Type 2 - Level 2



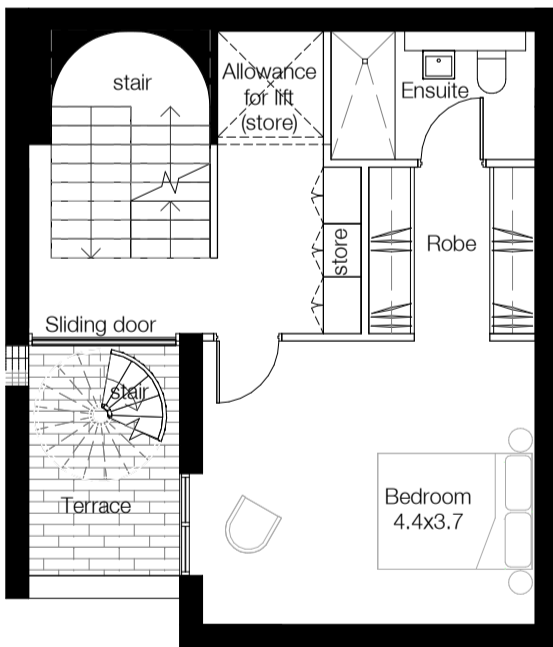
Terrace Type 2 - Roof



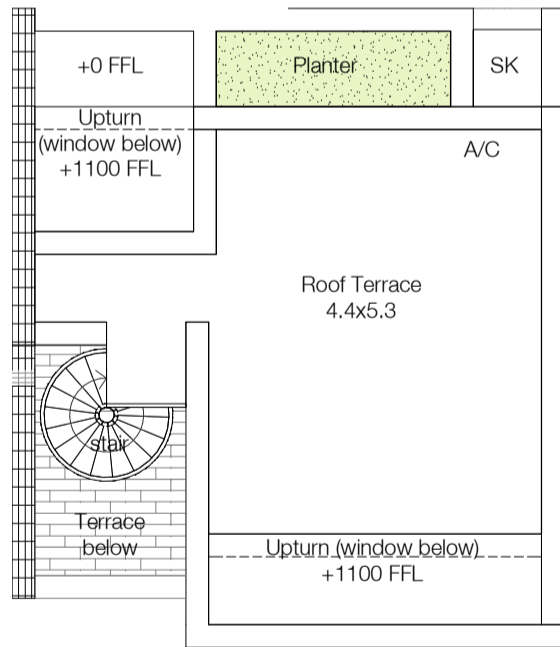
Terrace Type 1 - Ground



Terrace Type 1 - Level 1



Terrace Type 1 - Level 2



Terrace Type 1 - Roof

Planning & Heritage

Urbis

Landscape Architect

Arcadia Landscape Architecture

BCA

Building Certificates Australia

Services, Hydraulic & BASIX

Integrated Group Services

Civil & Geotech

EI Australia

Traffic

Ason Group

Waste Management

Elephant's Foot Waste Compactors

Arborist

Naturally Trees

Access Consultant

Vista Access Architects

Client

Ashbury FMBM Pty Ltd

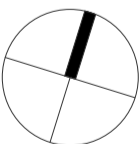
Project

Milton Street

149-163 Milton Street  
Ashbury NSW  
2193

Drawing Name

Apartment Plans - Building A & E



Date 27.08.2020 Scale 1 : 100 Sheet Size @ A1

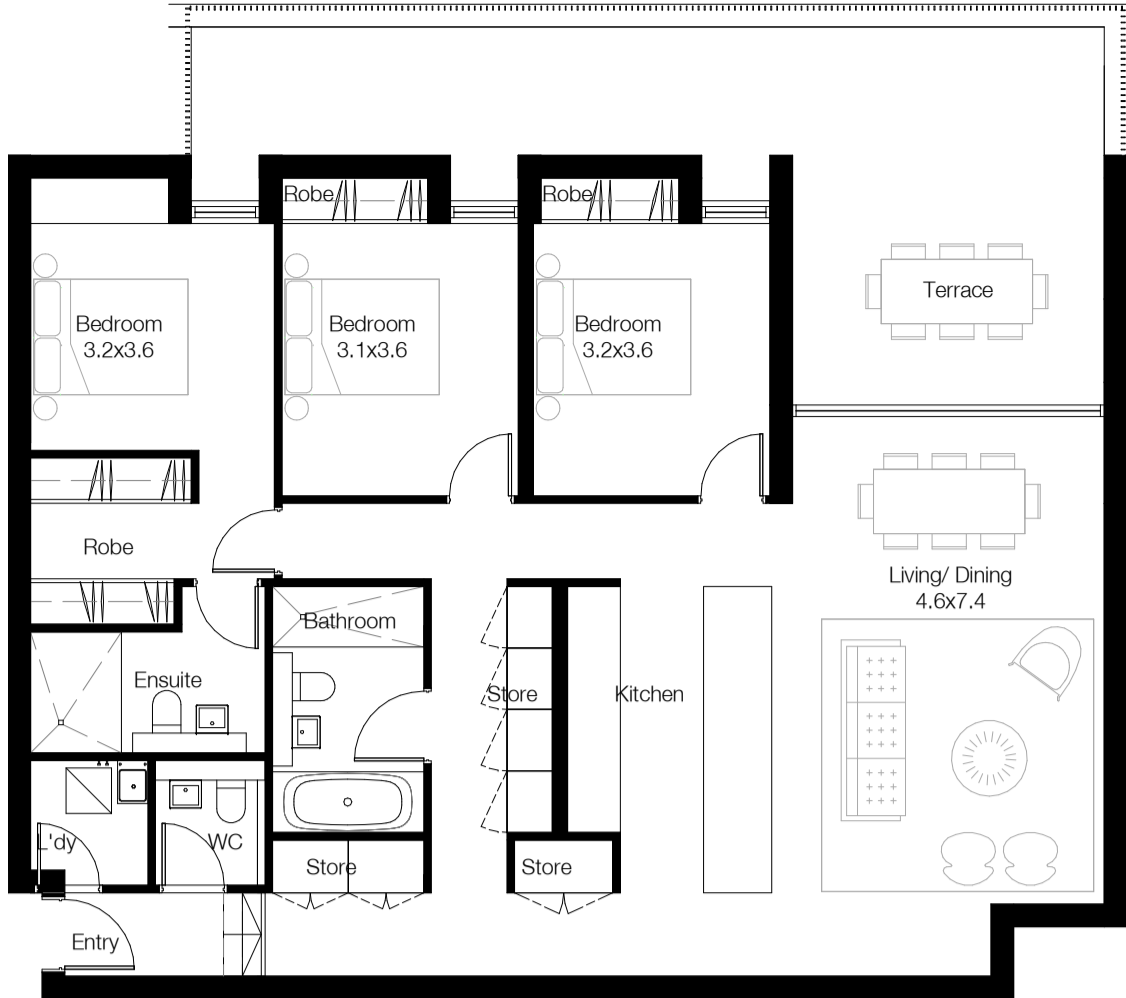
Drawn JS Chk. WG

Job No. 6119 Drawing No. DA-1401 Revision / 4

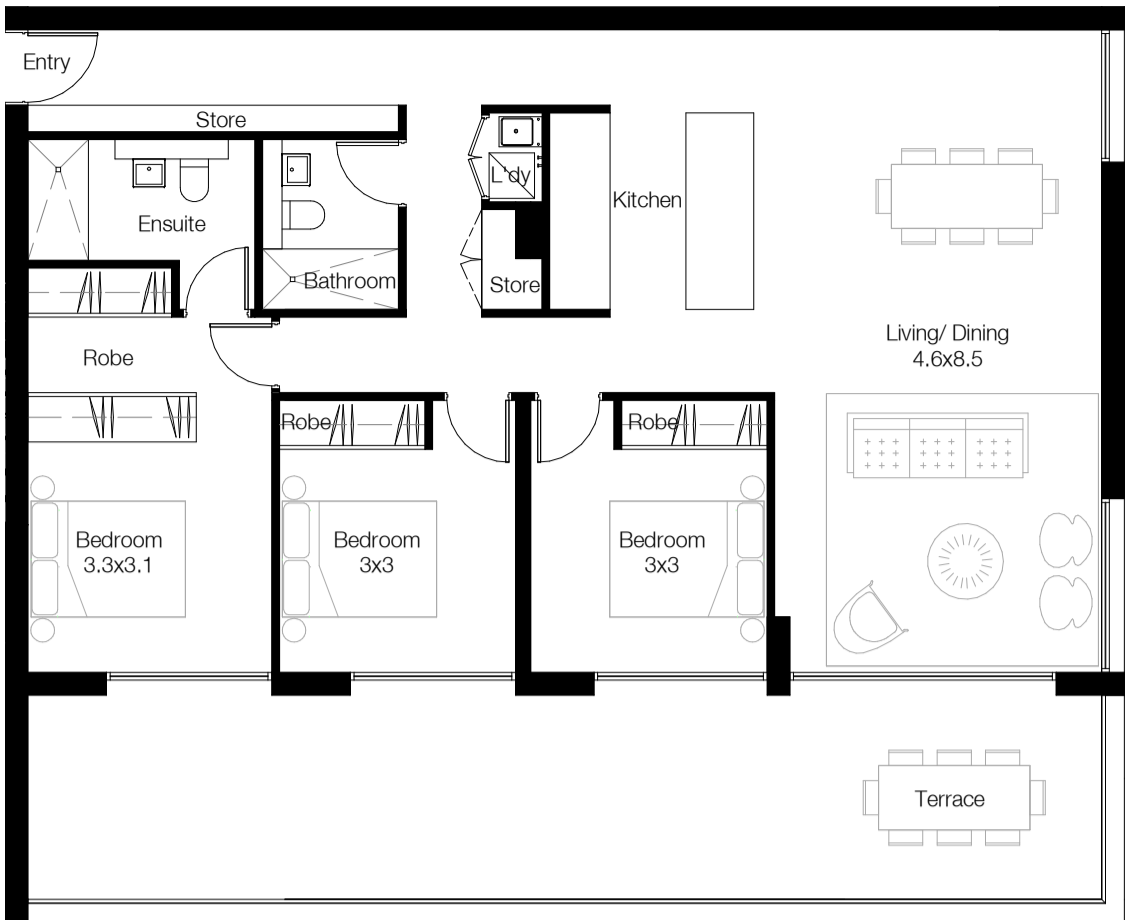




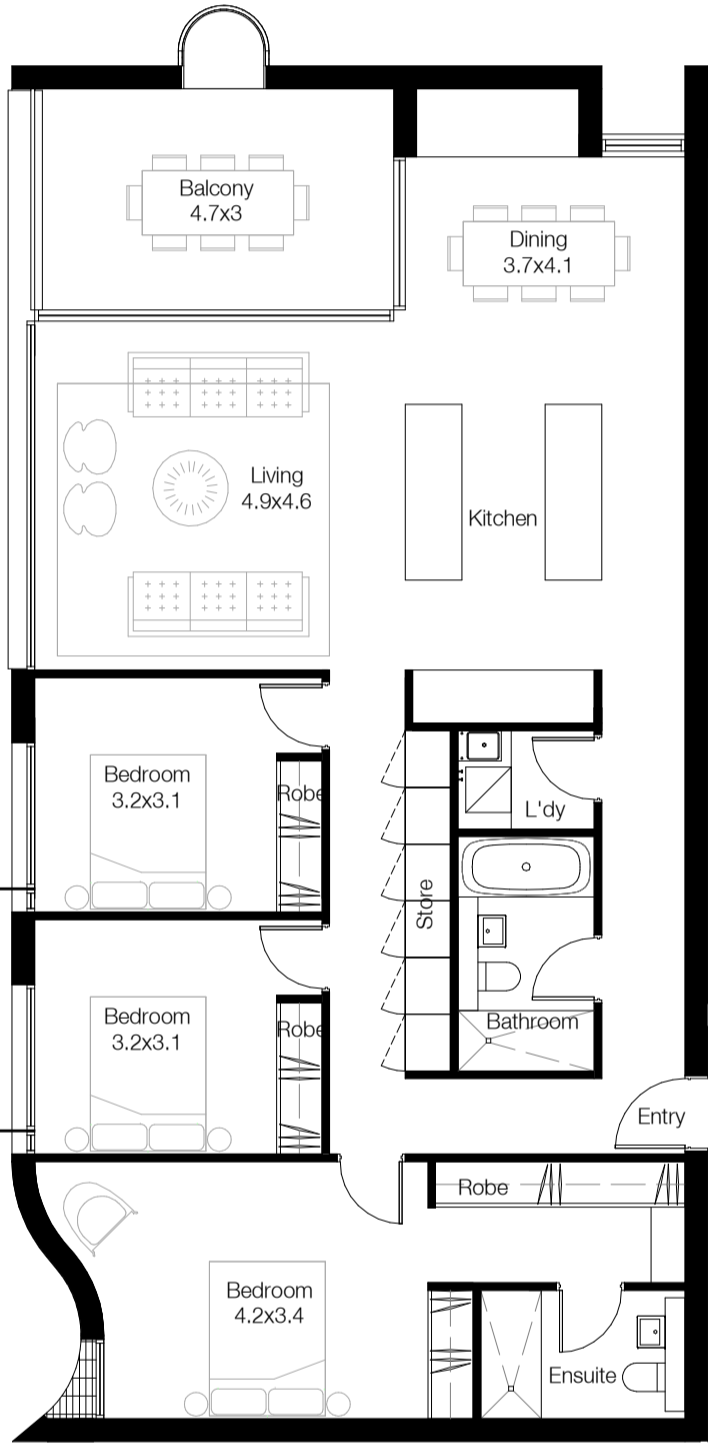
B\_3 Bedroom\_Typical



B\_3 Bedroom Ground Typical



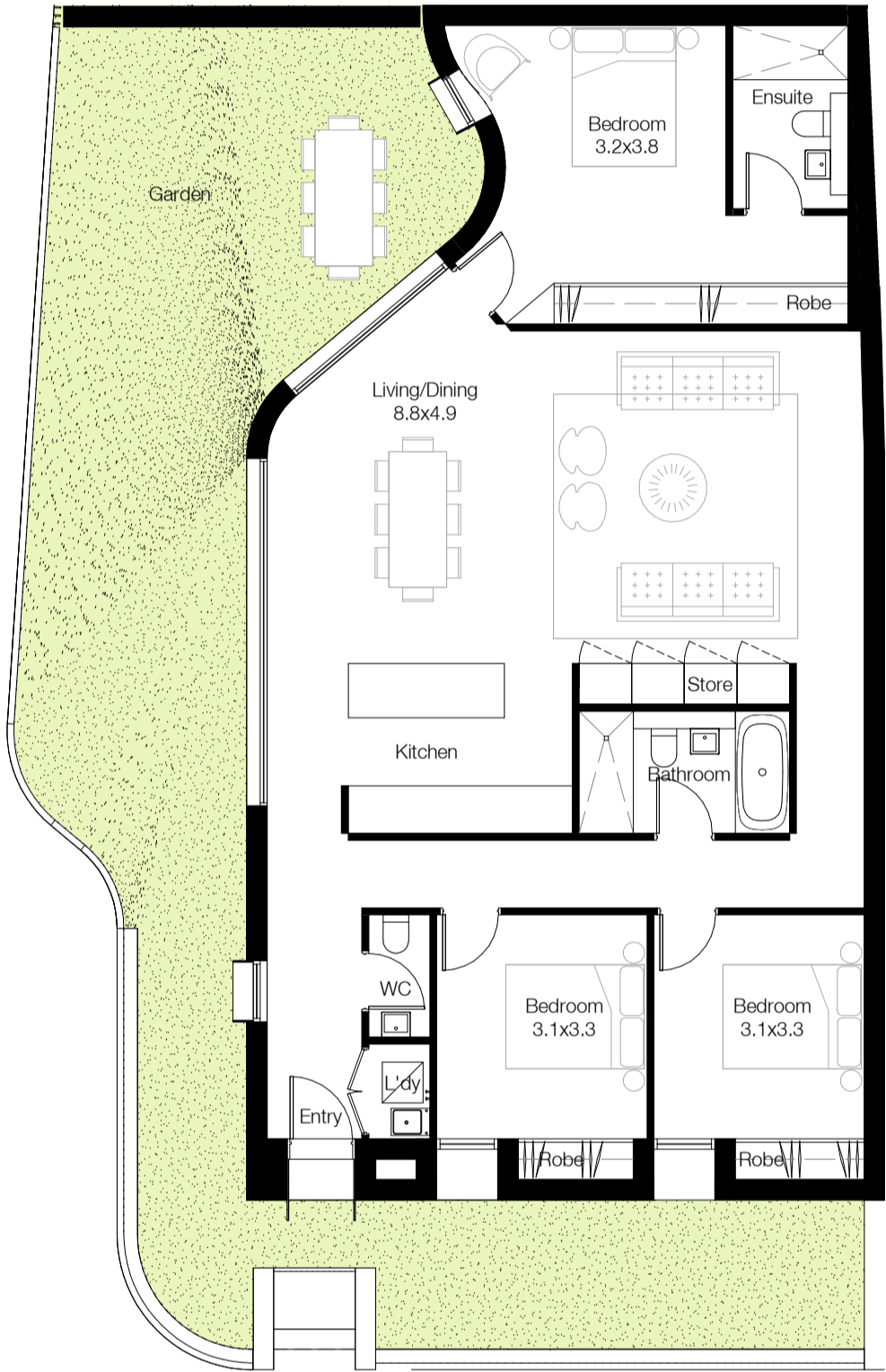
B\_3 Bedroom Level 4



B\_3 Bedroom\_Typical North West



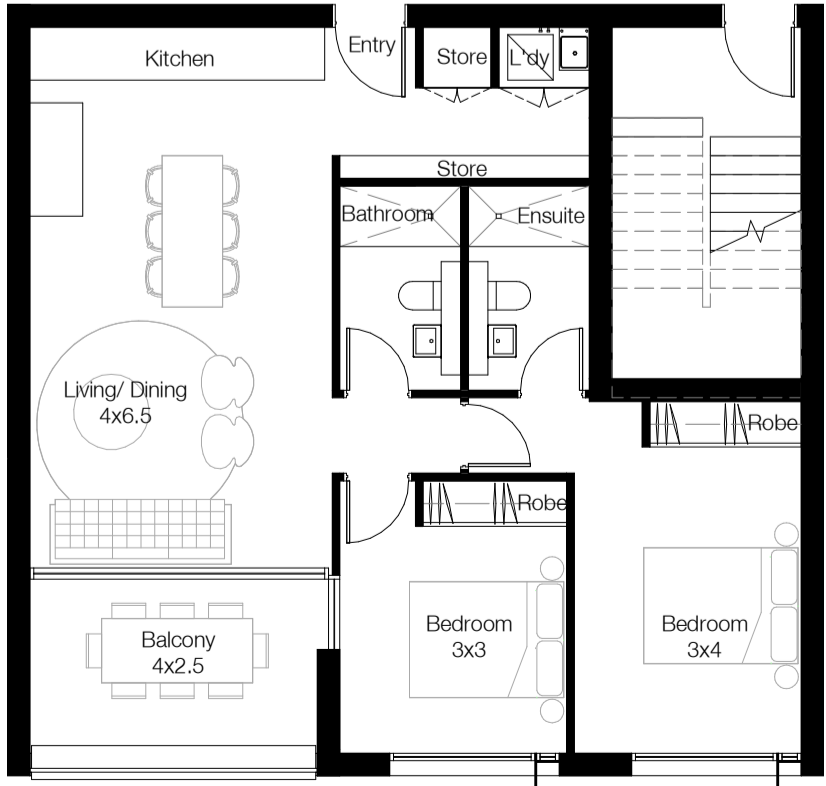
B\_3 Bedroom Ground North West



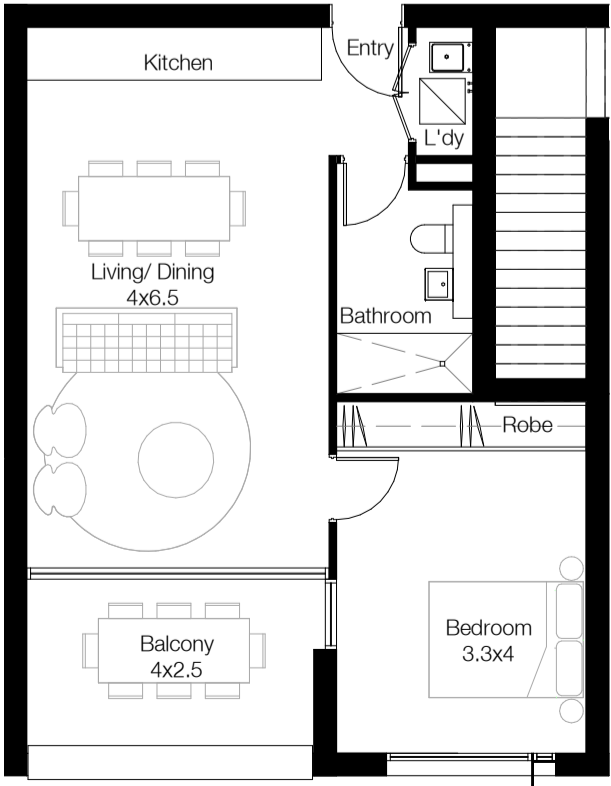
B\_3 Bedroom Ground South West



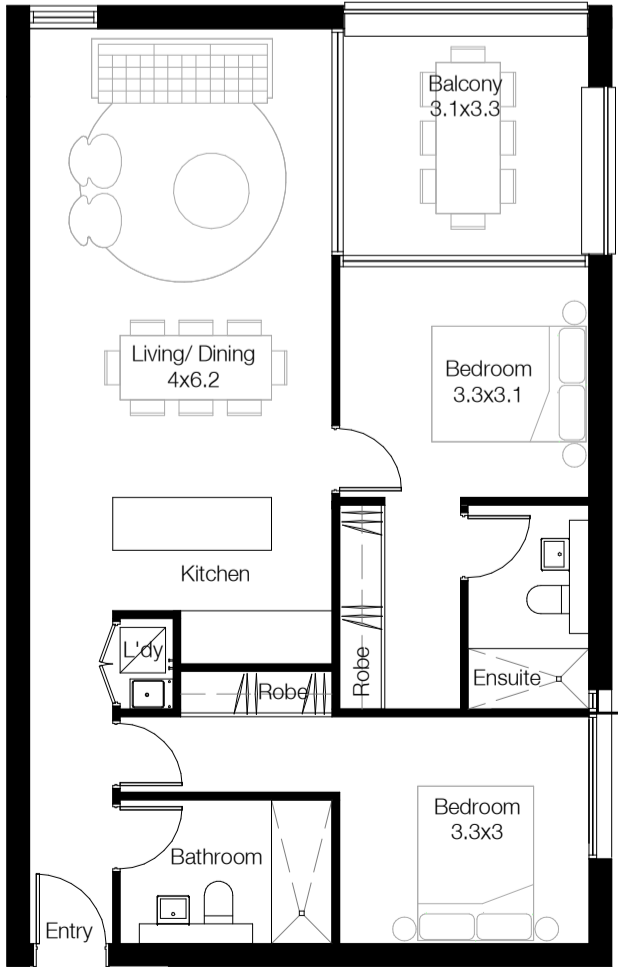
B\_3 Bedroom\_Typical South West



B\_2 Bedroom\_Typical South



B\_1 Bedroom\_L1 South



B\_2 Bedroom\_Typical North

In accepting and utilising this document the recipient agrees that SJB Architecture (NSW) Pty. Ltd. ACN 081 094 724 T/A SJB Architects, retain all common law, statutory law and other rights including copyright and intellectual property rights. The recipient agrees not to use this document for any purpose other than its intended use; to waive all claims against SJB Architects resulting from unauthorised changes; or to reuse the document on other projects without the prior written consent of SJB Architects. Under no circumstances shall transfer of this document be deemed a sale. SJB Architects makes no warranties of fitness for any purpose. The Builder/Contractor shall verify job dimensions prior to any work commencing. Use figured dimensions only. Do not scale drawings.

Nominated Architects: Adam Haddow-7188 | John Pradel-7004

## FOR APPROVAL

| Rev | Date       | Revision                 | By | Chk. |
|-----|------------|--------------------------|----|------|
| 1   | 05.05.2020 | Preliminary - DA Set 20% | JS | WG   |
| 2   | 18.05.2020 | Preliminary - DA Set 40% | JS | WG   |
| 3   | 27.08.2020 | For DA                   | JS | WG   |

Planning & Heritage

Urbis

Landscape Architect

Arcadia Landscape Architecture

BCA

Building Certificates Australia

Services, Hydraulic & BASIX

Integrated Group Services

Civil & Geotech

EI Australia

Traffic

Ason Group

Waste Management

Elephant's Foot Waste Compactors

Arborist

Naturally Trees

Access Consultant

Vista Access Architects

Client

Ashbury FMBM Pty Ltd

Project

Milton Street

149-163 Milton Street  
Ashbury NSW  
2193

Drawing Name

Apartment Plans - Building B

| Date       | Scale   | Sheet Size |
|------------|---------|------------|
| 27.08.2020 | 1 : 100 | @ A1       |

| Drawn | Chk. |
|-------|------|
| JS    | WG   |

| Job No. | Drawing No. | Revision |
|---------|-------------|----------|
| 6119    | DA-1402     | / 3      |

SJB Architects  
Level 2  
490 Crown Street  
Surry Hills NSW  
2010 Australia  
F 61 2 9380 9911  
www.sjb.com.au

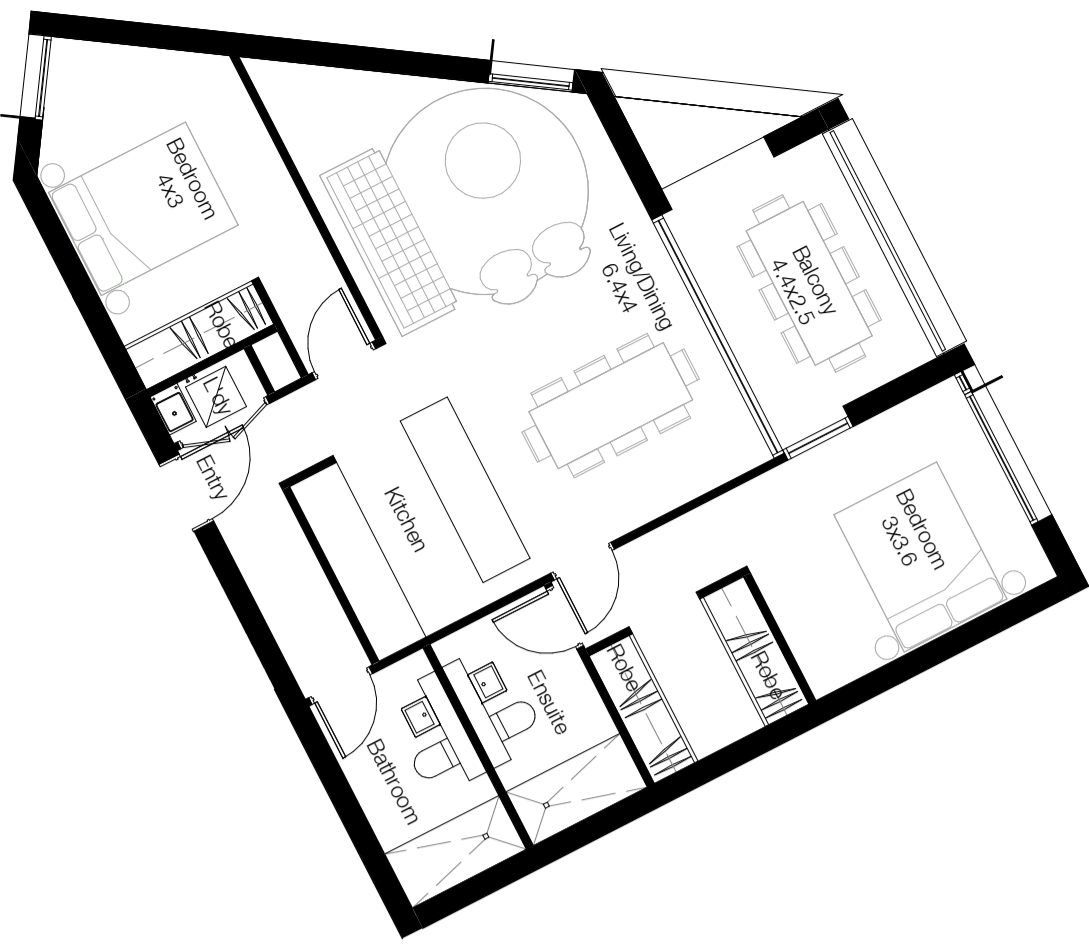




C\_1 Bedroom Typical East



C\_1 Bedroom Typical West



C\_2 Bedroom Typical North



C\_2 Bedroom Typical North East



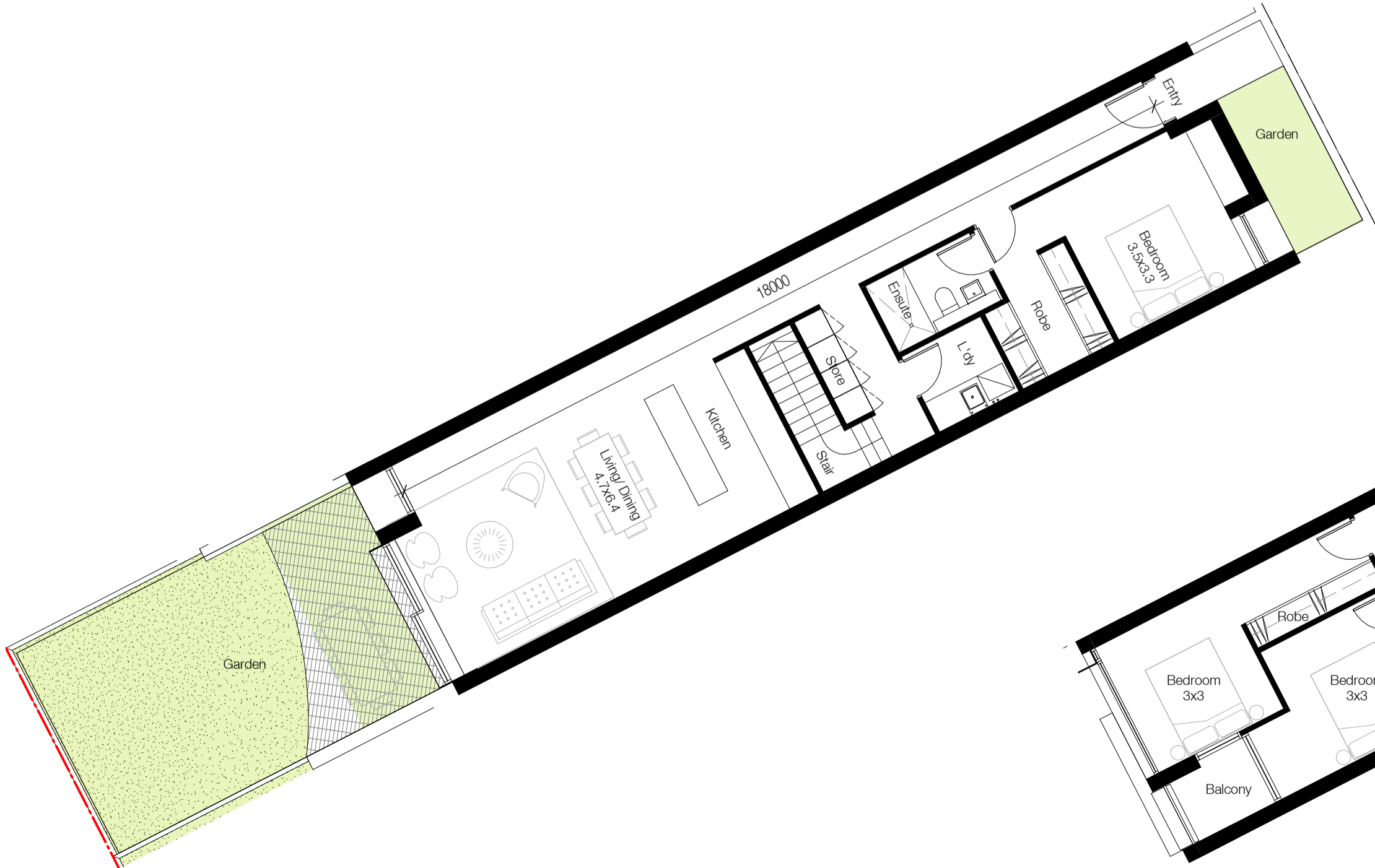
C\_3 Bedroom Typical



C\_3 Bedroom Typical North



C\_3 Bedroom Typical South East



C\_3 Bedroom Crossover (Gnd)



C\_3 Bedroom Crossover (L1)

In accepting and utilising this document the recipient agrees that SJB Architecture (NSW) Pty. Ltd. ACN 081 094 724 T/A SJB Architects, retain all common law, statutory law and other rights including copyright and intellectual property rights. The recipient agrees not to use this document for any purpose other than its intended use; to waive all claims against SJB Architects resulting from unauthorised changes; or to reuse the document on other projects without the prior written consent of SJB Architects. Under no circumstances shall transfer of this document be deemed a sale. SJB Architects makes no warranties of fitness for any purpose. The Builder/Contractor shall verify job dimensions prior to any work commencing. Use figured dimensions only. Do not scale drawings.

Nominated Architects: Adam Haddow-7188 | John Pradel-7004

## FOR APPROVAL

| Rev | Date       | Revision                 | By | Chk. |
|-----|------------|--------------------------|----|------|
| 1   | 05.05.2020 | Preliminary - DA Set 20% | JS | WG   |
| 2   | 19.05.2020 | Preliminary - DA Set 40% | JS | WG   |
| 3   | 27.08.2020 | For DA                   | JS | WG   |

Planning & Heritage

Urbis

Landscape Architect

Arcadia Landscape Architecture

BCA

Building Certificates Australia

Services, Hydraulic & BASIX

Integrated Group Services

Civil & Geotech

EI Australia

Traffic

Ason Group

Waste Management

Elephant's Foot Waste Compactors

Arborist

Naturally Trees

Access Consultant

Vista Access Architects

Client

Ashbury FMBM Pty Ltd

Project

Milton Street

149-163 Milton Street  
Ashbury NSW  
2193

Drawing Name

Apartment Plans - Building C

| Date       | Scale   | Sheet Size |
|------------|---------|------------|
| 27.08.2020 | 1 : 100 | @ A1       |

| Drawn | Chk. |
|-------|------|
| JS    | WG   |

| Job No. | Drawing No. | Revision |
|---------|-------------|----------|
| 6119    | DA-1403     | / 3      |

SJB Architects  
Level 2  
490 Crown Street  
Surry Hills NSW  
2010 Australia  
T 61 2 9380 9911  
F 61 2 9380 9922  
www.sjb.com.au

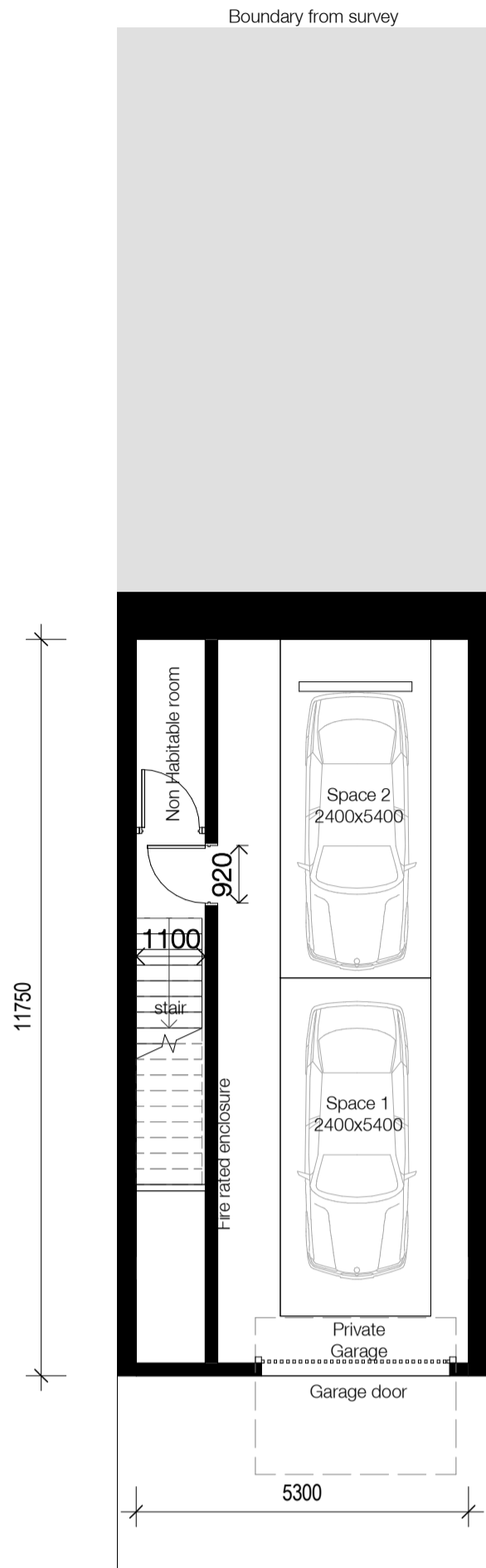


In accepting and utilising this document the recipient agrees that SJB Architecture (NSW) Pty. Ltd. ACN 081 094 724 T/A SJB Architects, retain all common law, statutory law and other rights including copyright and intellectual property rights. The recipient agrees not to use this document for any purpose other than its intended use; to waive all claims against SJB Architects resulting from unauthorised changes, or to reuse the document on other projects without the prior written consent of SJB Architects. Under no circumstances shall transfer of this document be deemed a sale. SJB Architects makes no warranties of fitness for any purpose. The Builder/Contractor shall verify job dimensions prior to any work commencing. Use figured dimensions only. Do not scale drawings.

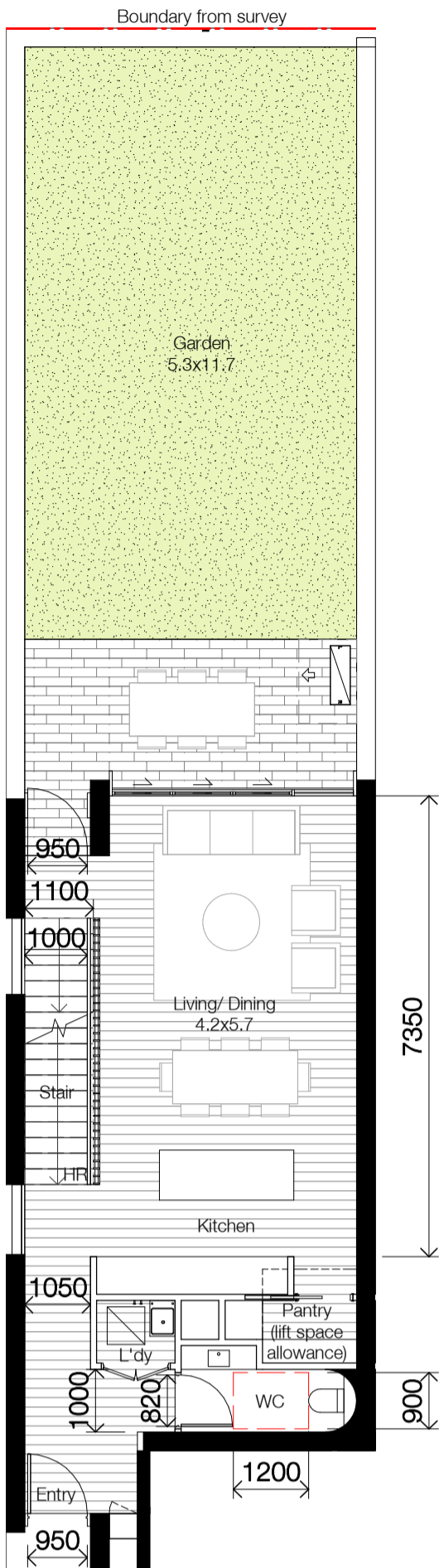
Nominated Architects: Adam Haddow-7188 | John Pradel-7004

FOR INFORMATION

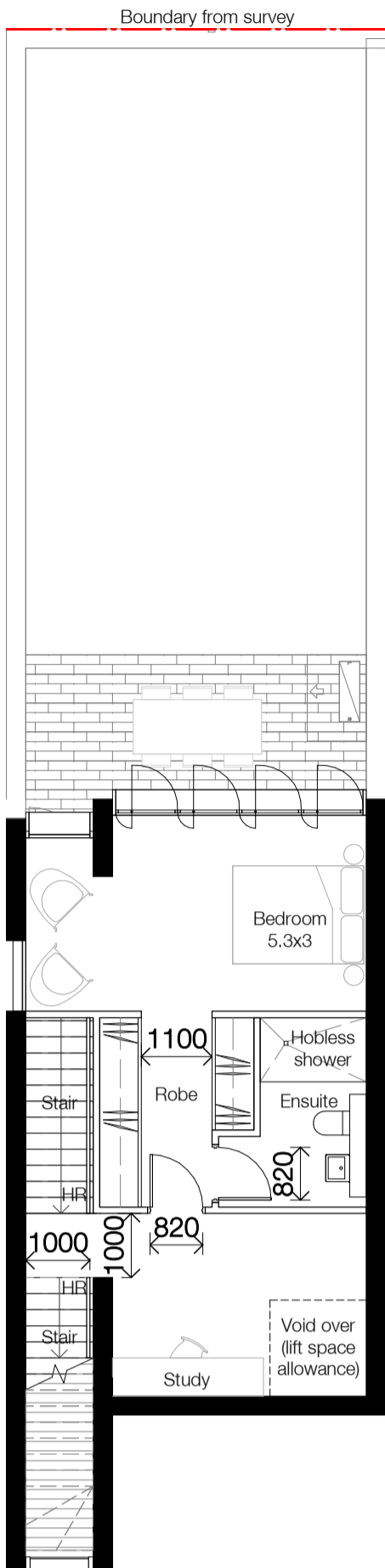
| Rev | Date       | Revision                 | By | Chk. |
|-----|------------|--------------------------|----|------|
| 1   | 05.05.2020 | Preliminary - DA Set 20% | JS | WG   |
| 2   | 18.05.2020 | Preliminary - DA Set 40% | JS | WG   |
| 3   | 21.07.2020 | For Coordination         | JS | WG   |
| 4   | 27.08.2020 | For DA                   | JS | WG   |



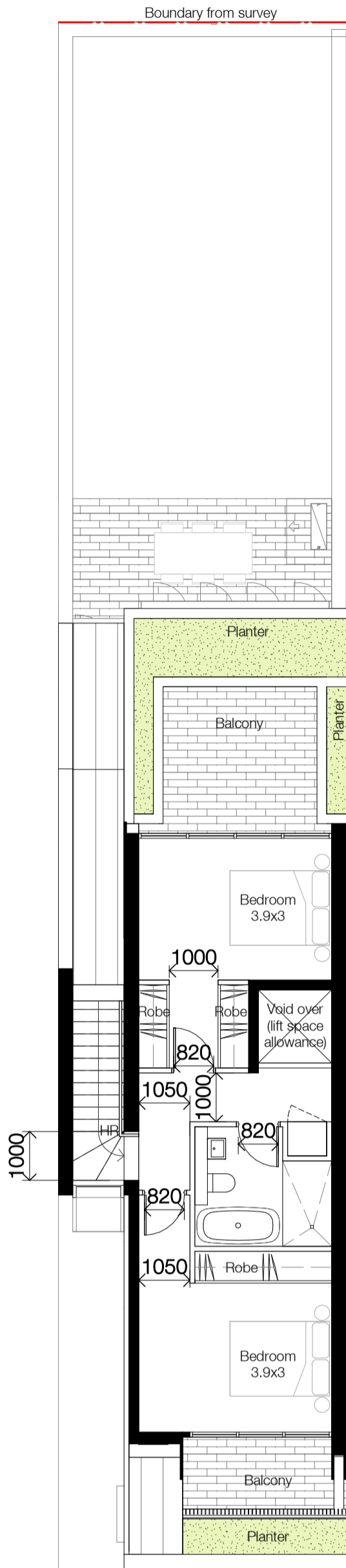
NOTE: LIVEABLE HOUSING - SILVER LEVEL  
D - Terrace Type 3 B



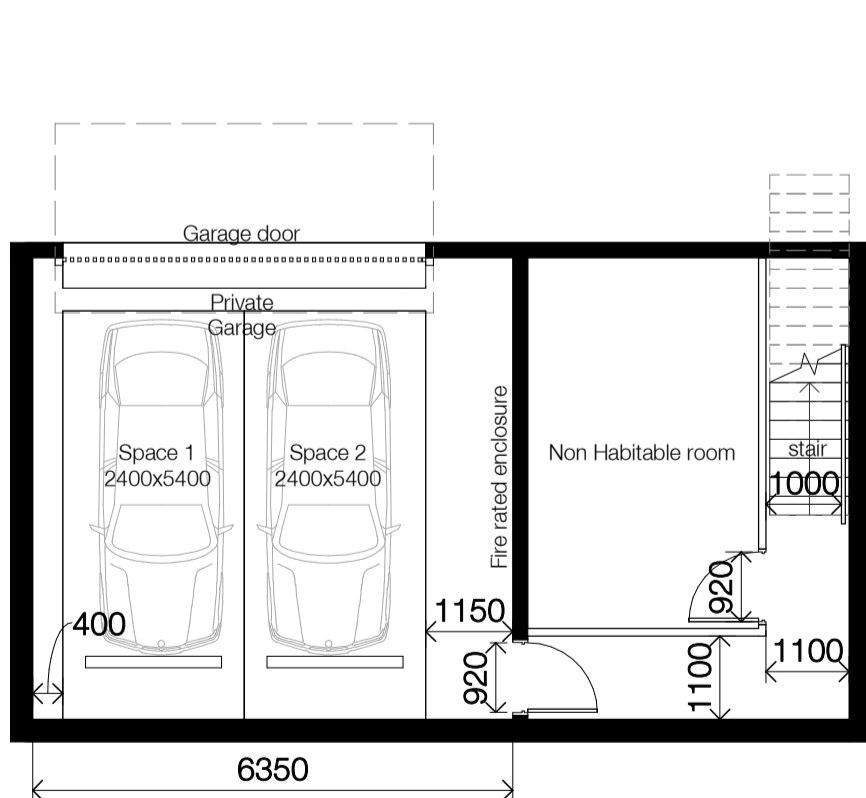
NOTE: LIVEABLE HOUSING - SILVER LEVEL  
D - Terrace Type 3 G



NOTE: LIVEABLE HOUSING - SILVER LEVEL  
D - Terrace Type 3 L1

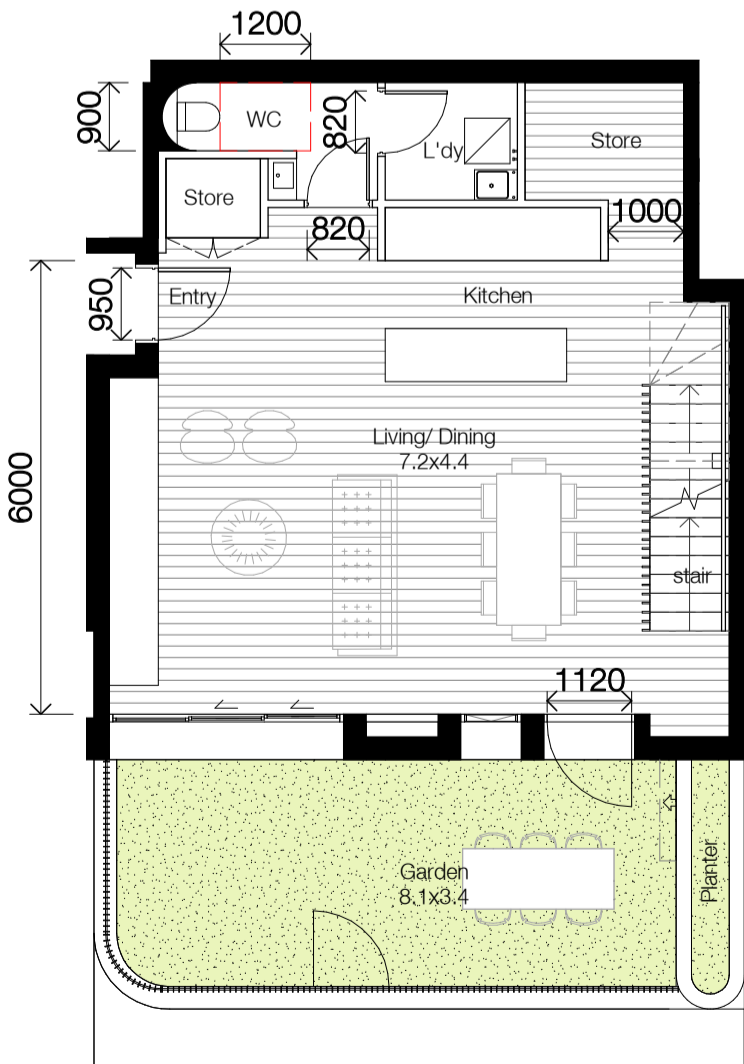


NOTE: LIVEABLE HOUSING - SILVER LEVEL  
D - Terrace Type 3 L2



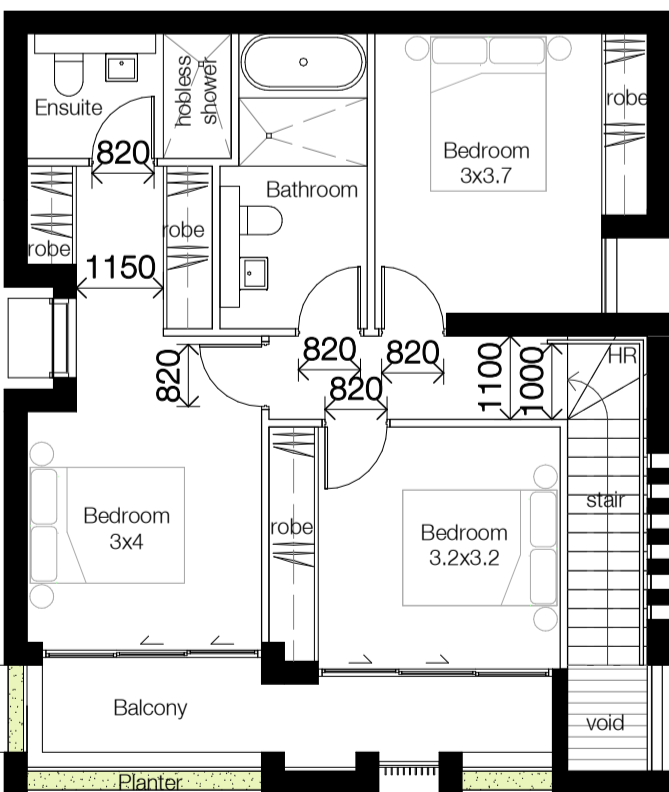
NOTE: LIVEABLE HOUSING - SILVER LEVEL

D - Terrace Type 4 Basement



NOTE: LIVEABLE HOUSING - SILVER LEVEL

D - Terrace Type 4 Ground



NOTE: LIVEABLE HOUSING - SILVER LEVEL

D - Terrace Type 4 Level 1

Client

Ashbury FMBM Pty Ltd

Project

Milton Street

149-163 Milton Street  
Ashbury NSW  
2193

Drawing Name

Apartment Plans - Building D

Date: 27.08.2020  
Scale: 1 : 100  
Sheet Size: @ A1

Drawn: JS

Chk.:

WG

Job No. Drawing No. Revision

6119 DA-1404 / 4

SJB Architects  
Level 2  
490 Crown Street  
Surry Hills NSW  
2010 Australia  
T 61 2 9380 9911  
F 61 2 9380 9922  
www.sjb.com.au



Nominated Architects: Adam Haddow-7188 | John Pradel-7004

FOR APPROVAL

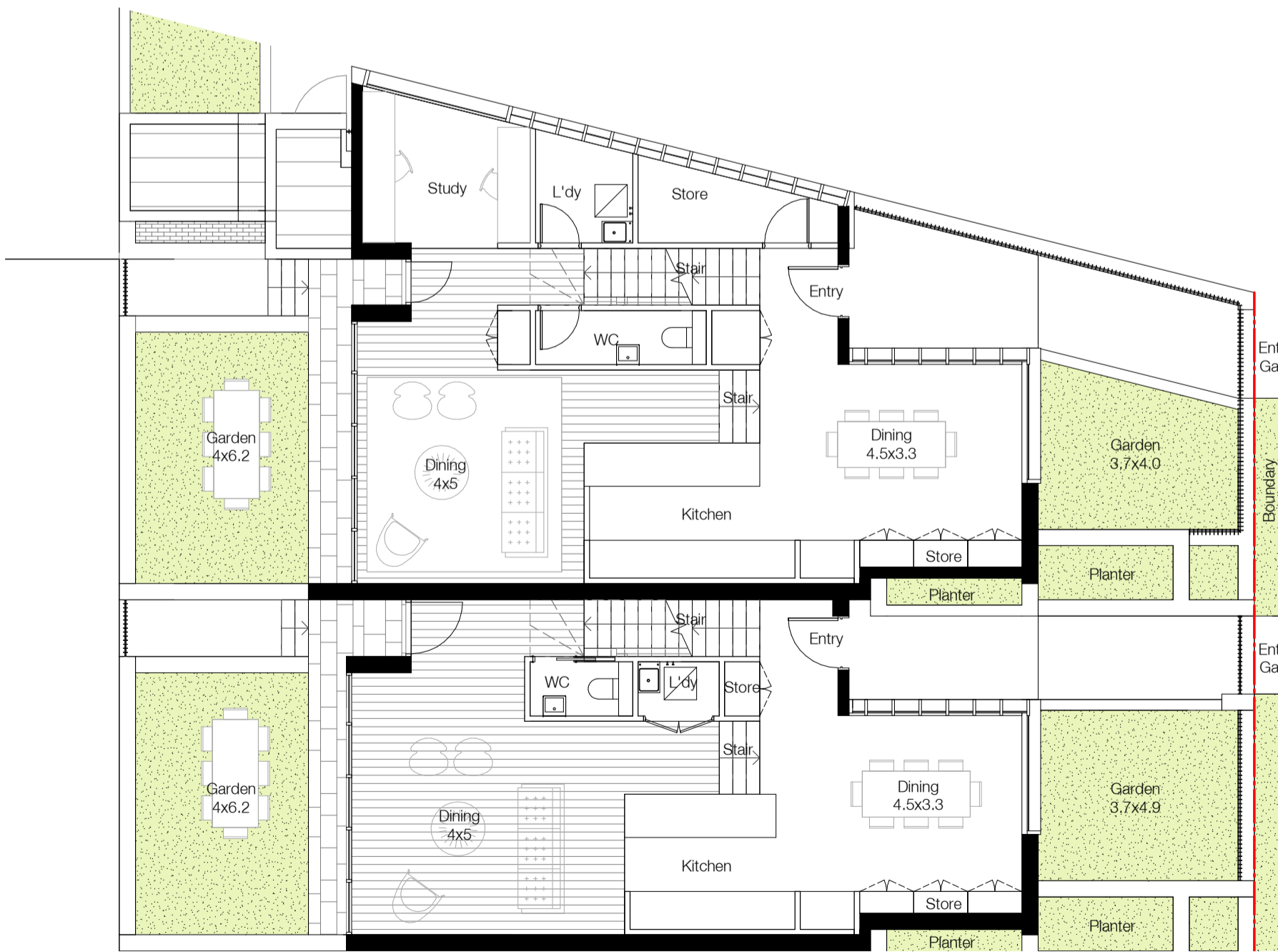
| Rev | Date       | Revision                 | By | Chk. |
|-----|------------|--------------------------|----|------|
| 1   | 05.05.2020 | Preliminary - DA Set 20% | JS | WG   |
| 2   | 19.05.2020 | Preliminary - DA Set 40% | JS | WG   |
| 3   | 27.08.2020 | For DA                   | JS | WG   |



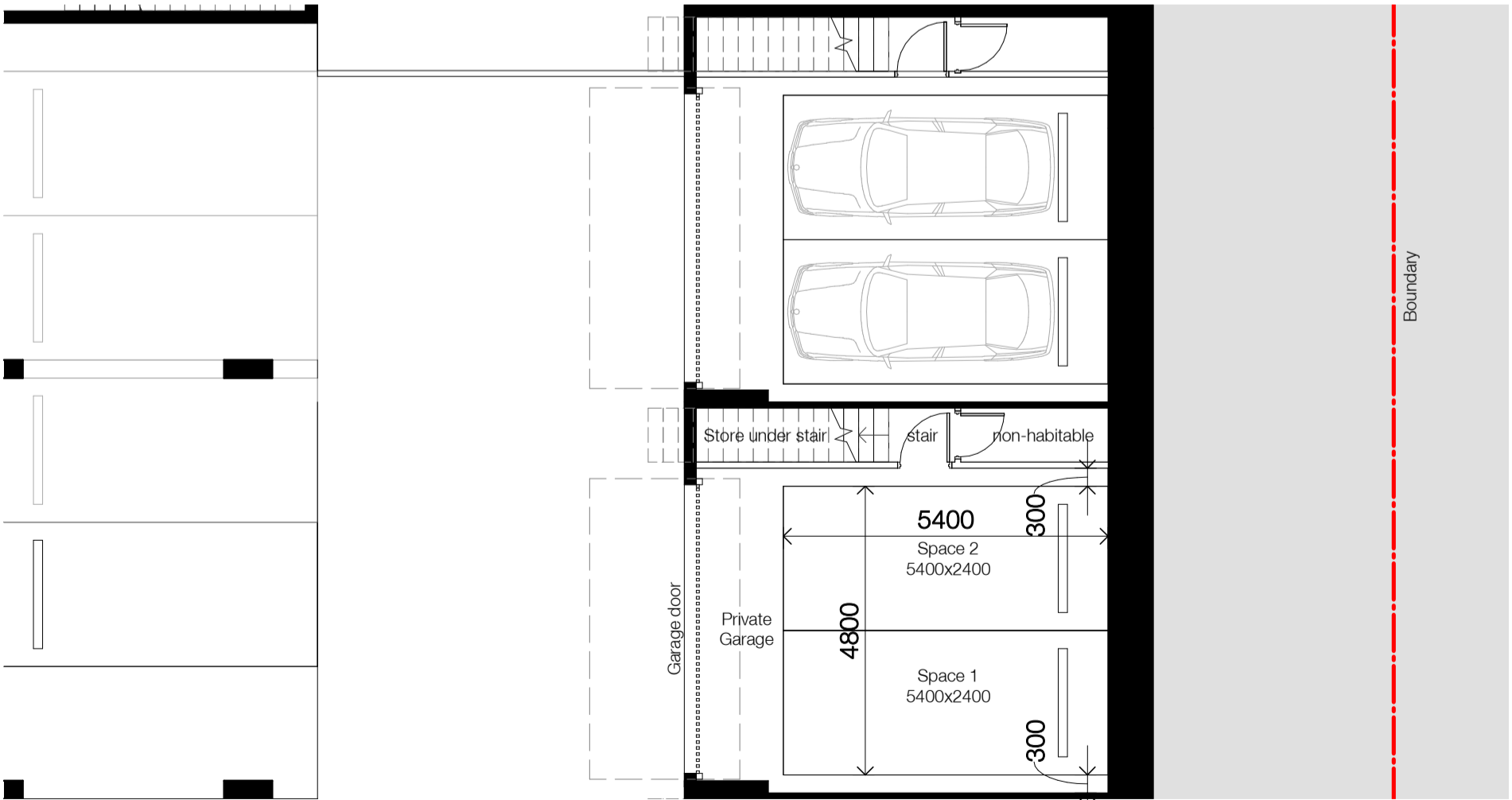
F - Terrace Type 5 Level 1



F - Terrace Type 5 Roof



F - Terrace Type 5 Ground



F - Terrace Type 5 Basement

Planning & Heritage

Urbis

Landscape Architect

Arcadia Landscape Architecture

BCA

Building Certificates Australia

Services, Hydraulic & BASIX

Integrated Group Services

Civil & Geotech

EI Australia

Traffic

Ason Group

Waste Management

Elephant's Foot Waste Compactors

Arborist

Naturally Trees

Access Consultant

Vista Access Architects

Client

Ashbury FMBM Pty Ltd

Project

Milton Street

149-163 Milton Street  
Ashbury NSW  
2193

Drawing Name

Apartment Plans - Building F

Date Scale Sheet Size

27.08.2020 1 : 100 @ A1

Drawn Chk.

JS WG

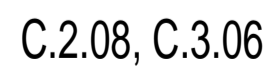
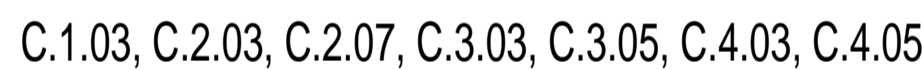
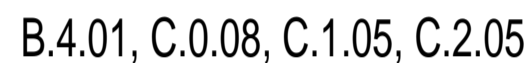
Job No. Drawing No. Revision

6119 DA-1405 / 3

Nominated Architects: Adam Haddow-7188 | John Pradel-7004

| Rev | Date       | Revision         | By | Chk. |
|-----|------------|------------------|----|------|
| 1   | 21.07.2020 | For Coordination | JS | WG   |
| 2   | 27.08.2020 | For DA           | JS | WG   |

| Rev | Date       | Revision         | By | Chk. |
|-----|------------|------------------|----|------|
| 1   | 21.07.2020 | For Coordination | JS | WG   |
| 2   | 27.08.2020 | For DA           | JS | WG   |



Urbis

Arcadia Landscape Architecture

Building Certificates Australia

## Integrated Group Services

El Australia

Ason Group

## Elephant's Foot Waste Compactors

## Naturally Trees

Vista Access Architects

**Ashbury FMBM Pty Ltd**

Milton Street

Drawing Name

### Adaptable Apartment Types

|       |      |
|-------|------|
| Drawn | Chk. |
| JS    | WG   |

|         |             |          |
|---------|-------------|----------|
| Job No. | Drawing No. | Revision |
| 6119    | DA-1406     | / 2      |

